

# StreamScope® MT-50

## HDT MPEG Analyzer

### Transport Stream Troubleshooting at Your Fingertips

Broadcast, cable, and broadband TV engineers use the award-winning StreamScope MT-50 HDT analyzers from Triveni Digital because no diagnostic tool brings more efficiency and ease-of-use to DTV quality control.

### High-definition touchscreen

The StreamScope MT-50 HDT is a state-of-the-art multiport professional MPEG analyzer with a high-definition touchscreen. At the touch of a finger or stylus, you can use its user-friendly interface to view real-time graphs and charts, create custom views, drill down to metadata details, configure analysis rules, check table errors, and more.

### Complete MPEG analysis

The StreamScope MT-50 HDT provides comprehensive MPEG troubleshooting, including video rendering, closed captioning, PCR timing, LKFS graphs, PID data, EPGs, and IP, RF, and GOP analysis. The MT-50 HDT analyzes the major transport stream input types, including 10GigE, Quad ASI, and SMPTE-310. And it automatically applies the latest DTV industry transport stream standards, including SCTE-142 and ISDB.



See how fast and easy MPEG analysis can be. Request a free demonstration or price quote today.



"The StreamScope MT-50 enables broadcast, cable, satellite and IPTV operators to observe and evaluate DTV transport streams, plugging directly into the backbone switch to ensure performance and reliability." — *Multichannel News*



### Key Features and Benefits

- 17-inch, 1920 x 1080 pixel, 16:9 HD touch screen
- 10GigE/GigE, QAM, ASI, DVB, RF, SMPTE-310, and file inputs
- ATSC 608/708, SCTE 20/21, and DTH closed captioning
- Triggered recordings of CALM Act audio loudness violations
- Analyzes up to 10 transport streams (20 IP routes) simultaneously
- MPEG-2/4 SD/HD and HEVC video rendering, thumbnails, and bitrates
- Real-time MER/BER SNR, peak meters, and audio LKFS graphs
- PCR jitter, video buffer, and audio buffer analysis
- Configurable analysis rules, data thresholds, and recording triggers
- Live MDI and RTP analysis of IP transport streams
- Current and past EPG/ESG content and metadata
- Frame-by-frame Group of Pictures (GOP) playback
- Link to StreamScope remote TS monitors for network QoS assurance
- Linux-based OS, rugged construction, and padded case with wheels

# StreamScope<sup>®</sup> MT-50

## HDT MPEG Analyzer

### Helps Solve MPEG Problems

#### Transport Stream Errors

Provides at-a-glance overviews of recent rule violations, log events, and PID usage, with a rotating Program Wall.

#### Audio Loudness Violations

Displays real-time LKFS graphs with dialnorms, and triggers recordings of loudness events, to help ensure CALM Act compliance.

#### Closed Captioning Issues

Decodes, displays, and records terrestrial, cable, and DTH closed captioning for live verification and detailed analysis.

#### Metadata Problems

Pinpoints data thresholds, program data, and metadata table errors with a dynamic color-coded, drill-down status tree.

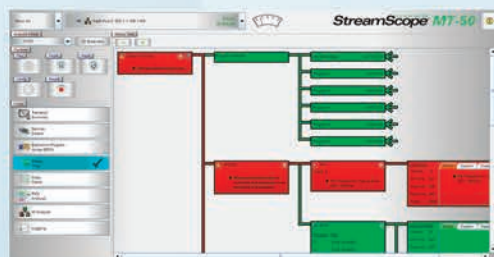
...and many more



Transport Summary view



Service Details view



Status Tree view



Electronic Program Guide (EPG) view



Packet Identifier (PID) view



IP Analysis view

### Specifications

#### Hardware and Software

Screen: 17-inch, 1920 x 1080 pixel LCD touch screen  
Size: 17.05" H x 13.62" W x 8.9" D  
Weight: 26.5 lbs. (12 kg)  
Expansion slots: Seven full-length  
Hard Drive: One 250 GB SATA RAID  
Optical Drive: One slim 5.25" DVD-RW  
Speakers: Two built-in 3-watt  
Keyboard: 104-key full-size with touchpad  
Housing: Aluminum with rubber corners  
Power Supply: 650W Active PFC 80 Plus  
Carrying case: Padded with wheels  
OS: Linux-based Ubuntu  
Apps: StreamScope MT-50 client/server

#### Data Communications

USB ports: Six USB 3.0, two USB 2.0 Ethernet  
ports: Two GigE RJ-45 LAN

#### Environmental

Operating temperature: 0° to 50° C  
Operating humidity: 10% to 90%  
Non-operating temperature: -20° to 60° C

Specifications subject to change



Triveni Digital, Inc.  
40 Washington Road  
Princeton Junction, NJ 08550  
609.716.3535 | t  
609.716.3503 | f  
info@trivenidigital.com  
trivenidigital.com

**triveni**  
DIGITAL